

Stone Lodge School

Induction Pack For Pupils and Parents

Tel: 01536 904277 email: Hayley.black@stonelodgeschool.org

Web www.stonelodgetherapeuticschool.co.uk

Stone Lodge Therapeutic School



CONTENTS

- The school team
- School ethos and vision
- Where are we? School Location, address and phone number
- Term dates 2023–2024
- The school day/ curriculum/ structure
- Tour of school/ location of classrooms
- Lunch provisions
- Uniform policy
- Transport
- Mobile Phones
- Wellbeing/ Bullying
- Absence and sickness
- Behaviour policy
- Safeguarding

The School Team



Stone Lodge School

Principal— Ollie Sharp

Deputy Head—Kerry Williams

Head of English and Humanities—Carole Hargrave

Head of Maths—Amy Loake

Head of Science - Alex Barraclough

Art Teacher—Alice Girdlestone

SENCO—Hayley Johnson

Outdoor Education Lead—Craig Anderson

ICT Lead— Mike Horden

PE Lead — Adrian Brawn

Classroom Mentor—Miranda Coles, Megan Goode, Polly Shackleton, Kim Turtle, Caron Rogers (also Forest School)

Business Manager—Hayley Black

Administrator and exams officer—Shirley Hilton

Family Support Worker—Lesley Colquhoun

Head of Clinical Services - Stacey Whitehead

Clinical Psychologist—Dr Gina Gomez De LA Cuesta

Speech and Language Therapist—Hannah Dyson

Therapies Assistant Georgia Moore

Outreach Instructors— Sarah Powell— Stephanie Mason and Sophie Gill

Chair of Govenors—Jessie Walker

School Ethos and Vision



Stone Lodge School

A warm welcome to Stone Lodge Therapeutic School. As well as the information provided in this pack you can find further help on our website www.stonelodgetherapeuticschool.co.uk or feel free to contact us by email office@stonelodgeschool.org or by telephone 01536 904277

Care Understanding Ambition

Stone Lodge Therapeutic School is a small specialist school which operates on a simple ethos of care, understanding, ambition. We aim to deliver this in the following way:

CARE

We will look after you and make sure we make the right decisions to support you. We know that things can be difficult but we will support you all the way.

UNDERSTANDING

We will listen to you and try to understand what you need to flourish and succeed. We understand that everyone has things they find difficult and at times things can be challenging. We can only truly care for you if we understand you and what you need

AMBITION

We want you to be who you want to be. We want you to leave with the skills, qualification and confidence to succeed in college and work. We believe that the challenges you face should not define you or your potential.

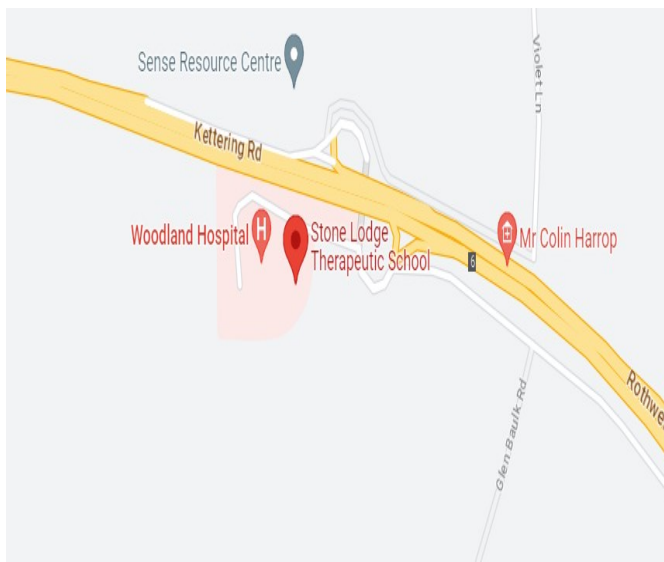
Where are we?



Stone Lodge School



Stone Lodge Therapeutic School, Rothwell Road, Kettering
NN168XF, tel 01536 904277



Stone Lodge School is located between Kettering and Rothwell westbound on the A14 in Kettering, Northamptonshire.

Term dates for academic years 2023-2024



Stone Lodge School

Summer Term 2023

Term starts	<i>On registration but not before June 5th 2023</i>
End of term	Depart on Friday July 21 st 2023

Autumn Term 2023

INSET Training Days: Thurs 31st August and Friday 01st September

Term starts	Monday 4th September 2023
Half term closure	Depart on Friday 13th October 2023 Return on Monday 30 th October 2023
End of term	Depart on Tuesday 19 th December 2023
Number of openings	67

Spring Term 2024

INSET Training Day: Tuesday 2nd January 2024

Term starts	Wednesday 3rd January 2024
Half term closure	Depart on Friday 16 th February 2024 Return on Monday 26th February 2024
End of term	Depart on Thursday 28 th March 2024
Number of openings	57

Summer Term 2024

Term starts	Monday 15 th April 2024
May Bank Holiday – school closed	Monday 6th May 2024 (one day only)
Half Term Closure	Depart on Friday 24 th May 2024 Return on Monday 3rd June 2024
End of term	Tuesday 23rd July 2024
Number of openings	66

Total for year = 190.

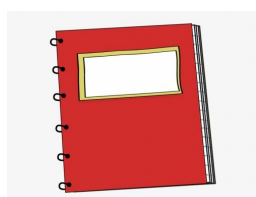


Stone Lodge School

The School Day/ Curriculum

The curriculum at Stone Lodge Therapeutic School is flexible and tailored to children as individuals, however we will expect pupils to complete GCSE or Functional Skills qualification (GCSE equivalent) in English, maths, science plus additional qualifications in chosen subjects including humanities, catering, computer science, PHSE, art and PE.

Some pupils also study vocational subjects according to their interests and aspirations - this can include a range of qualifications including motor vehicle, horse riding and construction. All pupils also complete outdoor education sessions tailored to pupils who can struggle in traditional learning situations. Our outdoor learning programmes are designed to teach life skills whilst developing character, resilience and increase the confidence of pupils.



The Curriculum: Preparing for Life.

Building Academic Achievement and Skills	Developing Social Skills, Emotional Resilience and Character	Developing Practical and Occupational Skills
English Maths Science Art PE ICT Careers PHSE Humanities	Duke of Edinburgh (Bronze/Silver) Climbing Fishing Horse riding Sailing Canoeing Orienteering Personal Fitness Therapy and SALT PACE	Catering Construction Motor Vehicle Land Management Employability Small Animal Care Work Experience
Offered at a range of levels including GCSE/ BTEC / Entry Level / Functional Skills / Unit Awards depending on age and ability	Offer for non-qualification purposes however qualifications from specialist bodies are achieved i.e. NICA L1 -L3 for climbing	Offered at BTEC L1, L2 / NCFE E3, L1, L2 / City and Guilds ASDAN / Open Awards / ABC L2

The School Day / Learning Structure



Stone Lodge School

The school hours are 8.50am - 3.00pm



We try to make learning as easy as possible with a mixture of academic and practical learning throughout the day.

You will also get the chance to do outdoor education. This will increase your confidence and social skills.

Each lesson is 50 minutes long and there are 6 lessons a day, 4 in the morning and two in the afternoon.

We also have the 2 Rs:

Regulation: This is 15 minutes at the start of the day. When you arrive this gives you a chance to get ready to relax for learning. This may be reading, sensory circuits, breakfast or playing a game of cards. You then find out what you have for the rest of the day.

Reflection: At the end of the day you will meet in your tutor time and talk about how the day went. This means that you can get rid of the stress of the day before you go home.

8.50am – Arrive, Regulation and Breakfast

9.15am P1

10.05am P2

10.55 – 11.00am Break

11.10am P3

12pm P4

12.50 – 1.10pm – Lunch

1.10pm – P5

2.00pm – P6

2.50pm – Reflection (a chance for pupils – assisted by staff - to reflect on their experiences of the day)

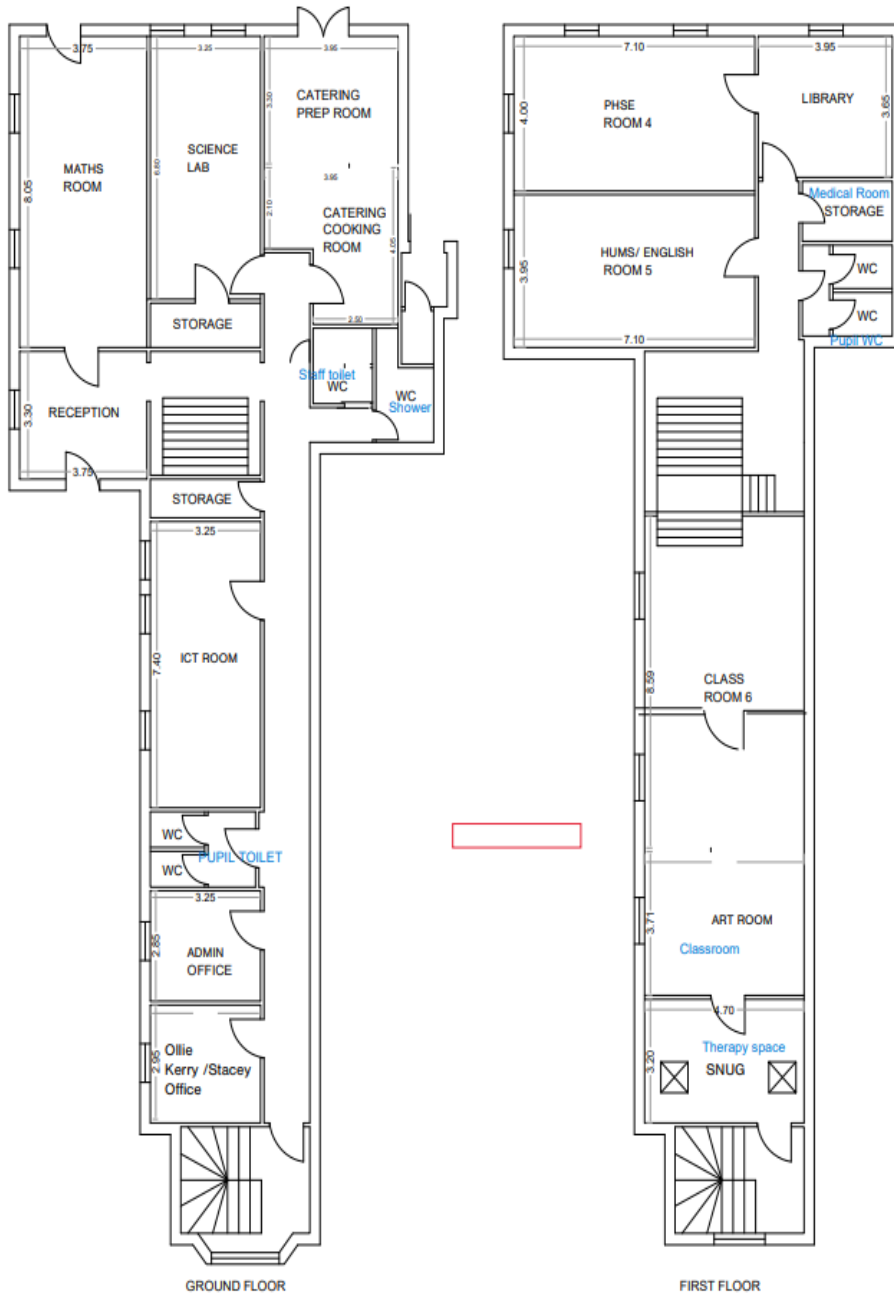
3pm – Home time.



Tour of Stone Lodge School



Stone Lodge School



The school is spread over two floors with a staircase in the middle. The ground floor has the Maths and Science classrooms as well as a lovely Food Studies kitchen leading out onto the garden. At the top of the central stairs is the Communal Room where pupils can eat lunch leading on to the Art Room and the Therapy

Uniform/ Lunch/ Travel



Stone Lodge School

Uniform

We do not have a school uniform at Stone Lodge Therapeutic School. We recognize that for some school uniforms can trigger memories of previous negative experiences and be a barrier to school attendance. We do ask that you come to school with clothing that is appropriate for the weather conditions.



Lunch

When you arrive in the morning you will be able to pick from a selection of sandwich fillings as part of a packed lunch provided by an outsourced company on behalf of the school. Alternatively you can bring your own packed lunch if you prefer and in this case we offer supermarket vouchers for parents.



Transport

Transport assistance can be applied for from the Local Authority in which the child resides. Typically, children are transported via taxi. We recognize that some children have difficulties with travelling or separating from safe adults at home. In these situations we can provide a bespoke travel program which can include school staff travelling with the children in the first instances.



Mobile Phones

Mobile phones are allowed in school for acceptable use. If the system is abused a phone ban will be applied to the individual.

Pupil Wellbeing



Stone Lodge is a therapeutic school which operates on established therapeutic principles and ethos. As part of our school ethos of Care we want to create a community that is caring and supportive of each other.

Pupils will have a dedicated tutor who will provide support and talk to pupils and parents to celebrate success and progress. Each tutor group will also have a Classroom Mentor who will be with them throughout the day. Pupils and parents are encouraged to speak to their tutor at any time they want or need to. In addition to your tutor, pupils can speak to any member of staff from the family support officer - Lesley—to Stacey—the Head of Clinical Services.

The Designated Safeguarding Officers are Lesley and Kerry
Ollie is the Designated Safeguarding Lead.

At Stone Lodge Therapeutic School:

- Everyone has the right to feel safe and secure.
- Pupils, parents and staff recognize that any form of bullying is completely unacceptable in our school.
- No member of staff will ever ignore a pupil that is being bullied or in distress. Any report of bullying will be followed up immediately and support given.

Please find below numbers for if you need any extra help or guidance.



0300 123 3393

The National Bullying Helpline

Call: 0300 323 0169

Sickness and Absence



Stone Lodge School

At Stone Lodge School we believe regular school attendance is essential if children are to achieve their full potential and stay safe. We will work with families to identify the reasons for poor attendance and try to resolve any difficulties at the earliest opportunity. We understand that school attendance may have been difficult in the past and we want to support parents and pupils.

There are some staff that have a key role in promoting good attendance:

- Ollie Sharp, Principal
- Hayley Black, Business Manager and Administrator
- Lesley Colquhoun, Family Support Officer

If a child is unavoidably absent from school a parent is expected to contact school by telephone call **01536 904277** on the morning of the first day of absence and on each subsequent day, identifying the reason for absence and expected date of return. If no contact is received then absence protocols will be instigated.

Stone Lodge School requests that parents;

- Ensure their child has regular attendance at school
- Contact the school if their child is absent to let them know the reason why, expected date of return and follow this up with a note wherever possible.
- Avoid unnecessary absences; for example by making medical and dental appointments for outside school hours.
- No pupil will be allowed to leave the school site without parental confirmation

Registers will be taken on arrival in the morning by welcoming staff in the car park and pupils will be escorted into the morning sessions.

The school day begins at 8.50am . The school register will be taken at 9am. If the pupils arrival is after 9am it will be recorded as late—L code

The school register will officially close at 9.20am.

Behaviour



Stone Lodge School

The main emphasis Stone Lodge Therapeutic school is not about making and enforcing rules but on creating an ethos of respect and consideration for others, and an environment where people help and support each other. Where rules are in place they are designed to promote a positive teaching and learning environment.

[Training teaches people how to behave in one situation—education teaches people how to behave in every situation.](#)

The school primarily seeks to create a warm and caring environment where pupils learn to trust adults, in order to provide security for individuals and the school and to promote personal development. The pupils need to develop an appreciation of the limits of their behavior. Pupils need to understand the implications for breaching these limits.

The expectations adults have of pupils should be regularly explained and reinforced.

Stone Lodge School adopts the following approaches to reduce the likelihood of such behaviours occurring or developing

- Teaching and learning that is outstanding or at least consistently good
- A curriculum that meets the needs and ambitions of the pupils
- Coaching and mentoring especially post incident reflection
- The use of restorative practice
- Teaching and learning that is relevant, differentiated to meet the need of the child
- The opportunity to make meaningful choices and reflect on those choices
- Careful attention to physical, sensory and emotional needs
- Experiences and activities that are appropriately stimulating
- Consistent and careful management of the environment and triggers for behaviour
- Warm and caring relationships with adults and their influence and impact
- Structure and consistency in everyday routines
- Clear and explicit boundaries and rules within the learning environment
- Regular explanation of the rules and expectations
- Clear warnings to pupils that their behaviour is of concern

Safeguarding



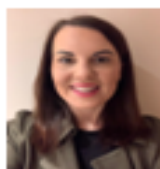
Stone Lodge School

School we are committed to safeguarding and promoting the welfare of children and require all staff, volunteers and visitors to share this commitment. At Stone Lodge Therapeutic

Designated Safeguarding Team



Ollie Sharp
Principal
Lead DSL



Kerry White
Deputy Head
Deputy DSL

The Designated Safeguarding Lead (DSL) should be your first point of contact for concerns and queries regarding Safeguarding in our school.

If you have any concerns about the conduct of the Principal please contact the Safeguarding Governor and Chair of Governors, Jessie Walker head@maplefields.northants-ecl.gov.uk The aim of our safeguarding policy is to ensure every child at our school is safe from harm. This means we will always work to:

- Protect children at our school from maltreatment.
- Prevent impairment of our children's mental and physical health or development.
- Ensure that children at our school grow up in circumstances consistent with the provision of safe and effective care which enables them to have the best outcomes.

In order to implement this:

- All members of staff will undertake safeguarding training on an annual basis. New members of staff will receive safeguarding training during the induction within one day of joining the school.
- Morning and after school briefings will share up to date information with staff.
- Every member of staff working with children at our school are advised to maintain an attitude of "it could happen here" where safeguarding is concerned.
- All staff are encouraged to report any concerns they have and not see them as insignificant.
- All concerns about a child should be reported without delay and recorded using the electronic recording system—Behaviour Watch
- All staff will be subject to Disclosure and Barring Service checks prior to employment to ensure we are recruiting the most suitable people to work with our children.

A full copy of our safeguarding policy is available on the website

www.stonelodgetherapeuticschool.co.uk A copy will be provided on request.